

Flow controllers & indicators, metallic CDV



- Operates in all positions
- Flow indicators, plus 1 flow contact
- Versions: Stainless steel or brass
- Pressure max. 16 bar
- Flow ranges from 0.005 up to 150 l/min

APPLICATIONS

Control and indication of flow-rate in cooling, high pressure pipings, dry-run pump prevention, etc.

DESCRIPTION

The CDV flow indicator is used to monitor and visualize the flow rate in a vertical or horizontal pipe with a fluid free of suspended particles.

Operation:

The fluid drives a magnetic orifice plate inside the cylindrical measuring tube. A spring balances its movement and allows to operate in all positions. The upper edge of the diver corresponds to the scale mark (graduated in ml/min or l/min) A Reed contact, N.O. with no flow, is adjustable all along the scale, its status changes with the passage of the plate.

With these equipments, the CDV operates independently of the pressure, even in low flow rates.

TECHNICAL FEATURES

Pressure limits	16 bar for fittings 1/4" & 1/2"; 10 bar for fittings 1"
Temperature	-20 ... +100 °C
Measuring scale unit	l/min of water at 20 °C
Accuracy	±10 % F.S.
Pressure drop	0.02 ... 0.4 bar (BSP 1") 0.2 ... 0.3 bar (BSP 1/2") 0.2 ... 0.2 bar (BSP 1/4")
Switch	N.O. without flow
Hysteresis	About 1.5 mm
Connection	DIN 43650 plug-in socket IP 65

Brass version

Body	Anodized aluminum
Fittings & orifice plate	Nickel plated brass
Spring	AISI 316 Ti (1.4571)
Seals	NBR
Magnet	Ferrite
Glass tube	Glass DURAN® 50

AISI version

Body	Anodized aluminum
Fittings, orifice plate	AISI 316 Ti (1.4571)
Spring	AISI 316 Ti (1.4571)
Seals	FPM
Magnet	Ferrite
Glass tube	Glass DURAN® 50

Other versions on request.

EC Conformity: The instrument meets the legal requirements of the current European Directives.



BAMO INTERNATIONAL

22, Rue de la Voie des Bans · Z.I. de la gare · 95100 ARGENTEUIL

Tel +33 (0)1 30 25 83 20 Web www.bamo.eu

Fax +33 (0)1 34 10 16 05 E-mail export@bamo.fr

Flow controllers & indicators,
metallic
CDV

29-11-2019

D-722.02-EN-AA

DEB

722-02/1

SWITCH FEATURES

Caution:

The Reed contact is mounted in an housing in polyamide.
Respect the switching power and protect the Reed as much as possible.

Standard supply: N.O. contact with no flow

CDV, fittings 1"	Rated: 230 V / 3 A / 100 VA
CDV, fittings 1/2"	Rated: 230 V / 3 A / 60 VA
CDV, fittings 1/4"	Rated: 140 V AC / 0.7 A / 20 VA
	Rated: 200 V DC / 1 A / 20 VA

OPTION : Change-over contact

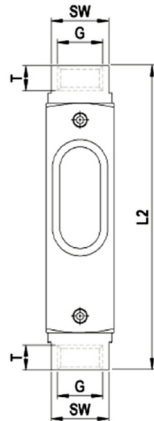
CDV, fittings 1/2" and 1"	Rated: 250 V / 1.5 A / 50 VA
CDV, fittings 1/4"	Rated: 150 V AC DC / 1 A / 20 VA

Contacts Ex, only for CDV fitting 1":

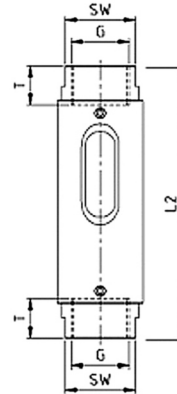
ATEX II 2 G Ex mb II T6 & ATEX II 2 D Ex tD A21 IP67 T80 °C
ATEX II 2 G Ex mb II T5 & ATEX II 2 D Ex tD A21 IP67 T100 °C
N.O. contact, rated: 250 V / 2 A / 60 VA; Change-over contact: 250 V / 1 A / 30 VA

CODE NUMBERS AND DIMENSIONS

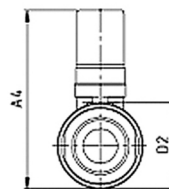
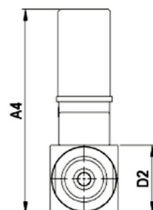
Code		Reference	Flow range [l/min]	Fittings BSPF		Dimension [mm]					Mass [g]
Brass	AISI 316 Ti			G	T	L2	D2	A4	SW		
722 500	722 600	CDV 01	0.005 ... 0.060	1/4"	10	90	20	60	17	140	
722 502	722 602	CDV 02	0.025 ... 0.13								
722 506	722 606	CDV 06	0.1 ... 0.6								
722 508	722 608	CDV 3	0.5 ... 3	1/2"	14	114	32	70	27	300	
722 528	722 628	CDV 8	2...8								
722 529	722 629	CDV 20	8...20	1"	17	158.5	50	104	41	900	
722 533	722 633	CDV 45	15...45								
722 536	722 636	CDV 90	30...90								
722 539	722 639	CDV 150	60...150								



CDV 01/02/06/3



CDV 8/20/45/90/150



BAMO INTERNATIONAL

22, Rue de la Voie des Bans · Z.I. de la gare · 95100 ARGENTEUIL
Tel +33 (0)1 30 25 83 20 Web www.bamo.eu
Fax +33 (0)1 34 10 16 05 E-mail export@bamo.fr

Flow controllers & indicators,
metallic
CDV

29-11-2019

D-722.02-EN-AA

DEB

722-02/2